

# LIGAWINE

LOW INPUT GRAPEGROWING AND WINEMAKING

## Low Input Grapegrowing and Winemaking

# OPEN CALL – Handout summary



**Co-funded by  
the European Union**

Funded by the European Union. Views and opinions expressed are however those of the author(s) only and do not necessarily reflect those of the European Union or EISMEA. Neither the European Union nor the granting authority can be held responsible for them.

## 1. What is the LIGAWINE Open Call?

The LIGAWINE Open Call will provide Financial Support to Third Parties (FSTP) to selected sub-projects that support the deployment, validation, and market uptake of low-input, sustainable, and digitally enabled solutions for viticulture and winemaking. Figure 1 provides an overview of the Open Call scheme.

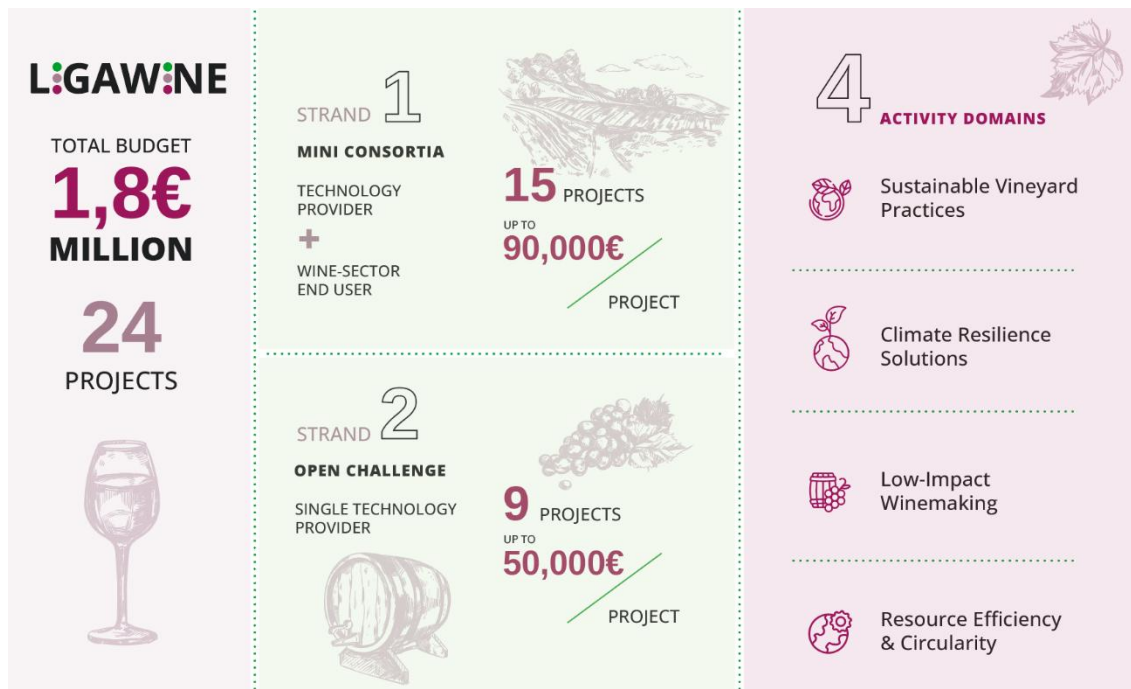


Figure 1 Overview of the LIGAWINE Open Call scheme



Figure 2 LIGAWINE support areas

The Open Call focuses on applied innovation, pilot validation, demonstration, deployment, and market-oriented adaptation. Basic research activities are not within the scope of the Open Call. Selected sub-projects should contribute to one or more of the areas presented in Figure 2.

## 2. Who can apply?

Applicants must be legally established entities and must meet the eligibility requirements described in the Applicants' Guide.

Role	Strand Eligibility	Description
Technology provider	Strand 1 and Strand 2	A legal entity that develops, owns, commercialises, integrates or significantly customises a technological product, process, system, digital tool, equipment, or technical solution that can be deployed and validated under real vineyard or winery conditions
Wine-Sector End User	Strand 1	A legal entity operating in the wine production value chain that can host or support real-life pilot validation and actively participate in testing, monitoring, data collection, and assessment of results

Applicants must be legally established SMEs and must meet the eligibility requirements described in the Applicants' Guide. Natural persons are not eligible. Eligible applicants may include SME start-ups, scale-ups, technology providers, digital solution providers, equipment manufacturers, solution integrators, testing laboratories, wine producers, wineries, wine cooperatives, and other SME organisations, provided they meet the role-specific requirements of the selected Strand.

**Organisations providing only general consultancy, training, communication, legal, financial, or advisory services without a deployable technological solution are not considered technology providers.**

**Applicants must also comply with the geographic eligibility rules set out in the Applicants' Guide, including establishment in an eligible region and, where applicable, the Less Developed Regions classification.**

## 3. What funding is available?

The LIGAWINE Open Call has a total budget of EUR 1,800,000 and is divided into two Strands.

Strand	Applicant structure	Indicative budget	Maximum funding	Expected projects
Strand 1: Mini-Consortia	One technology provider + one wine-sector end user	EUR 1,350,000	Up to EUR 90,000	15

<b>Strand 2: Open Challenges</b>	One technology provider	EUR 450,000	Up to EUR 50,000	9
--------------------------------------	-------------------------	-------------	------------------	---

For Strand 1, the maximum total funding per mini-consortium is EUR 90,000, with a ceiling of EUR 60,000 per third-party recipient. The budget distribution between the technology provider and wine-sector end user must be justified in the proposal.

Funding will be provided as a lump sum. No pre-financing is foreseen. Payments will be linked to the successful completion and acceptance of mandatory deliverables.

### 4. Less Developed Regions allocation

At least 70% of the total FSTP budget will be allocated to beneficiaries legally established in **Less Developed Regions**. This rule applies to the amount of funding awarded, not only to the number of selected projects.

For Strand 1, the calculation will be made separately for each consortium member according to the approved budget allocation. For Strand 2, the calculation will be based on the grant amount awarded to the single beneficiary.

**Passing the evaluation thresholds does not guarantee funding. The final selected portfolio must respect both the available budget per Strand and the 70% Less Developed Regions allocation requirement.**

### 5. Key dates

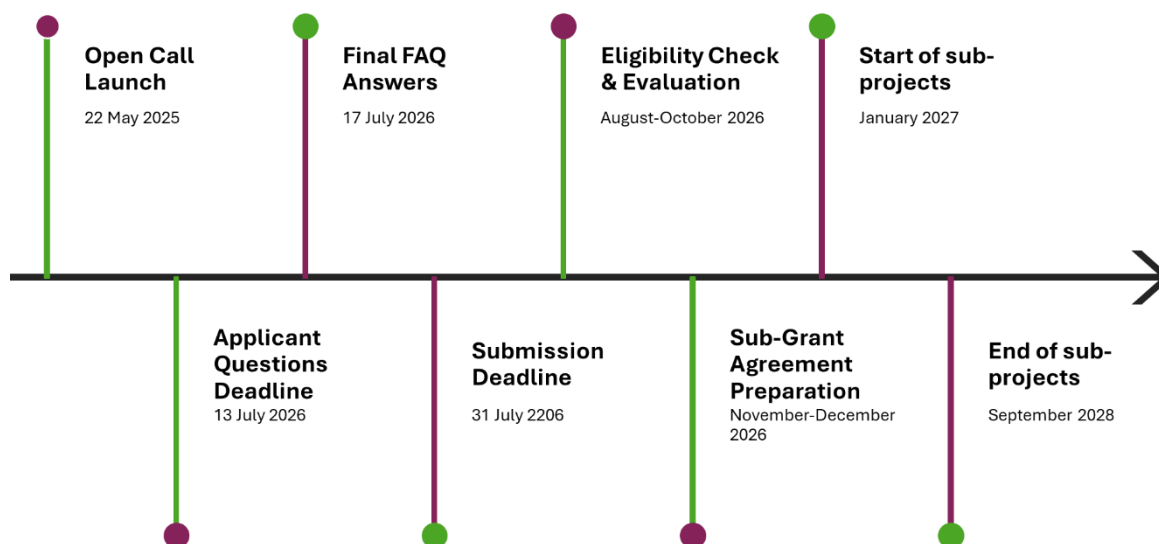


Figure 3 LIGAWINE Open Call timeline

### 6. Implementation and payments

Selected sub-projects are expected to run from January 2027 to September 2028 and payments will be made only after the relevant deliverable has been accepted. The phases are presented in Figure 4.



Figure 4 LIGAWINE Open Call Implementation Phases

## 7. How to apply

Applications must be submitted digitally through the [opencalls.fund](https://opencalls.fund) platform before the deadline. Applications submitted through any other channel will not be accepted.

Required document	Strand 1: Mini-Consortia	Strand 2: Single Applicant
Online Application Form	Yes	Yes
Technical Proposal	Yes	Yes
Budget Form	Yes	Yes
Consortium Declaration	Yes	No
Declaration of Honour	Yes, for each consortium member	Yes
SME Declaration	Yes, for both partners	Yes
Additional supporting documents	If applicable	If applicable

Applications must be submitted digitally through the [opencalls.fund](https://opencalls.fund) platform by 31 July 2026, 17:00 CET. Applications submitted through any other channel will not be accepted. For Strand 1, the application must be submitted by the Consortium Lead Partner on behalf of the mini-consortium. For Strand 2, the application must be submitted by the single technology provider.

## 8. Implementation and payments

The evaluation process includes:

1. Eligibility check
2. Remote evaluation by 2 independent external evaluators
3. Ranking and portfolio check
4. Less Developed Regions allocation check

## 5. Contracting of selected applicants

Eligible proposals will be evaluated using the following criteria:

Criterion	Score	Minimum threshold
Alignment	1–5	4
Excellence	1–5	3
Impact	1–5	3
Value for Money	1–5	3
Implementation	1–5	3

Proposals must score at least 3 points in each criterion and at least 16 points overall to be considered for funding.

## 9. Questions and support

Questions related to the LIGAWINE Open Call may be submitted through:

- Email: [ligawine@opencalls.fund](mailto:ligawine@opencalls.fund)
- Platform: FAQ section of the [opencalls.fund](https://opencalls.fund) platform
- Project website: LIGAWINE Open Call webpage
- Questions may be submitted until 13 July 2026 at 17:00 CET.

Answers of general relevance will be published anonymously in the FAQ section to ensure equal treatment of all applicants. Applicants are responsible for checking the FAQ regularly during the application period.

### Important note

**This handout is a summary document. Applicants must read the full Applicants' Guide and all documents included in the LIGAWINE Open Call Kit before submitting an application. In case of inconsistency, the Applicants' Guide and the applicable Open Call documents prevail.**